



Regional Train

# PÉ VERMELHO

(Red Foot Regional Train)



# 1 STATE OF PARANÁ

LOCATION AND GENERAL CHARACTERISTICS



Paraná is located in southern of Brazil. Its location makes it a **privileged entrance door for the Mercosul countries** (Argentina, Brazil, Paraguay and Uruguay).

Paraná is the **center of a market that consist of 250 million inhabitants** and that has a Gross Domestic Product of 3 trillion US dollars.



GENERAL DATA

AREA (km2)	199,880
POPULATION DENSITY (2013) (hab./km2)	55.02
NUMBER OF MUNICIPALITIES	399
PARANA'S POPULATION (2013)	10,997,462
BRAZIL'S POPULATION (2013)	201,032,714
SHARE WITHIN BRAZILIAN POPULATION (%)	5.5
URBAN POPULATION (2010) (%)	85.3%
HDI (2010)	0.749
CLIMATE	Subtropical



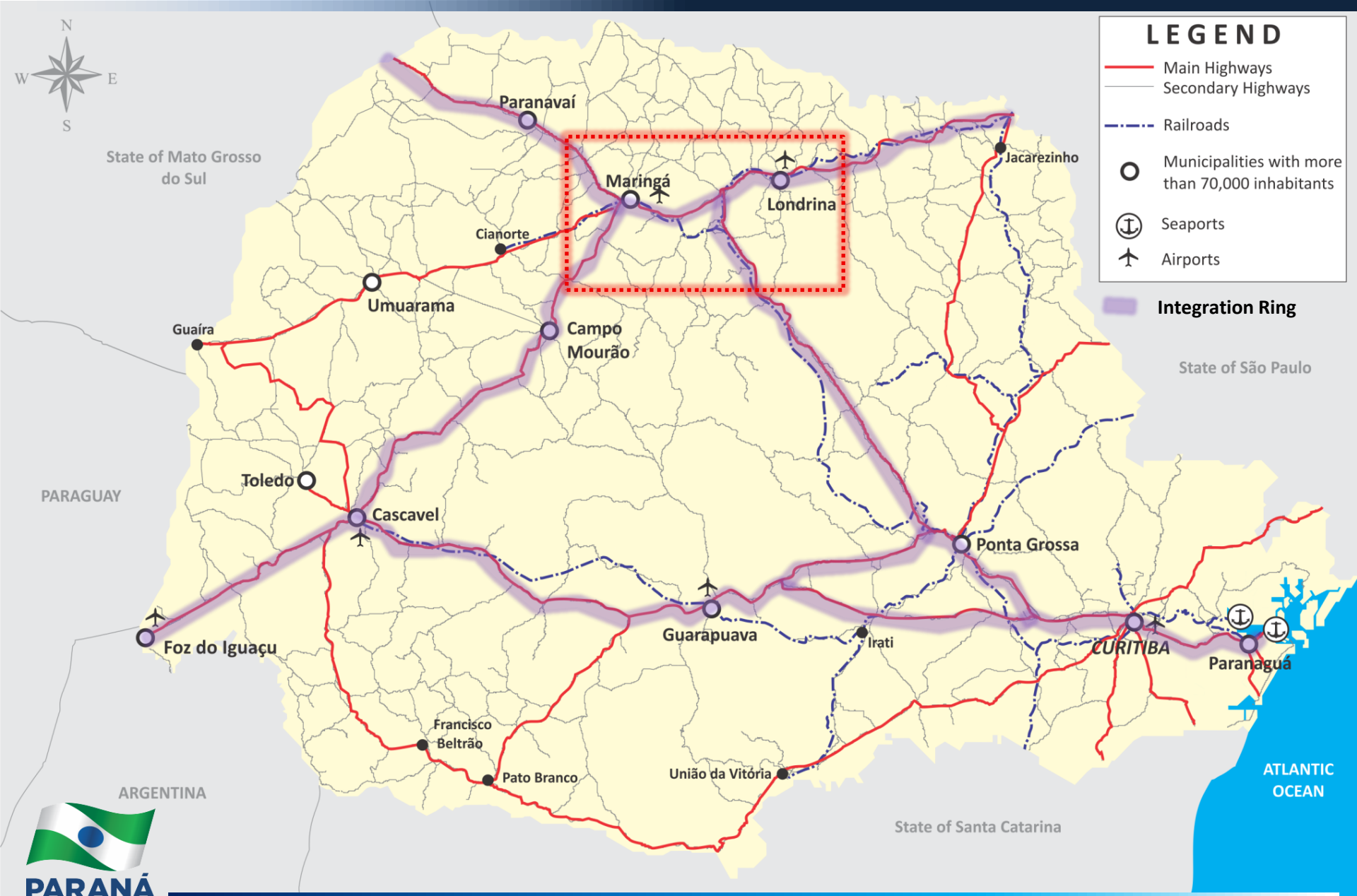
STATE OF PARANÁ – Main Cities

TRANSPORT INFRASTRUCTURE

LEGEND

- Main Highways
- Secondary Highways
- - - Railroads
- Municipalities with more than 70,000 inhabitants
- ⊓ Seaports
- ✈ Airports

Integration Ring

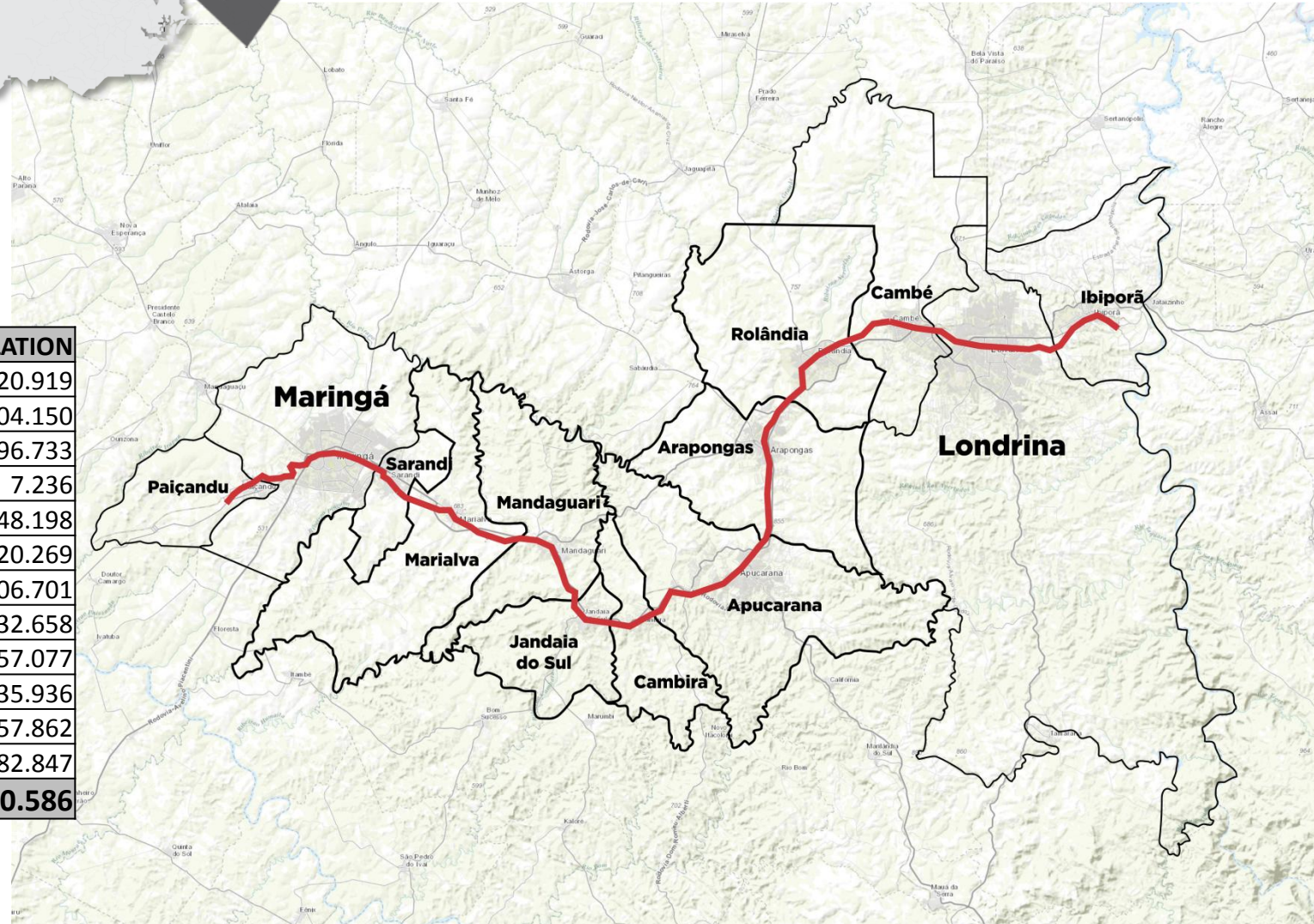




# 2 MARINGÁ AND LONDRINA

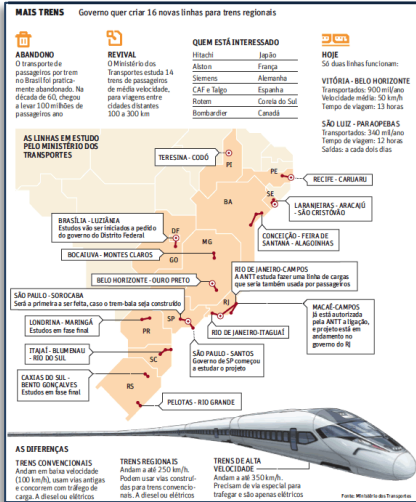
RED FOOT REGIONAL TRAIN

## MARINGÁ AND LONDRINA REGION



MUNICIPALITY	POPULATION
Apucarana	120.919
Arapongas	104.150
Cambé	96.733
Cambira	7.236
Ibiporã	48.198
Jandaia do Sul	20.269
Londrina	506.701
Mandaguari	32.658
Maringá	357.077
Paçandu	35.936
Rolândia	57.862
Sarandi	82.847
<b>TOTAL</b>	<b>1.470.586</b>

FEDERAL STUDY OF PASSENGER TRAINS POTENTIAL



Ministry of Transport hires UFRJ to realize potential study of passenger transport. Maringa Londrina-axis has the greatest potential for deployment.



INSTITUCIONAL JOINT

It is defined coordination and regional coordination for Development Terra Roxa agency.

2000

2005

2006

2008

DISCUSSION ABOUT PASSENGER TRAIN

Maringa Prefecture, through Urbamar, brought mayors, businessmen, pubic institutions and civil society organizations to discuss the passenger train.

PROCUREMENT OF EVTEA

The Ministry of Transport Hire the EVTEA (Feasibility Study Technical Economic and Environmental) UFSC - LabTrans. Participation of the UEL and EMU.

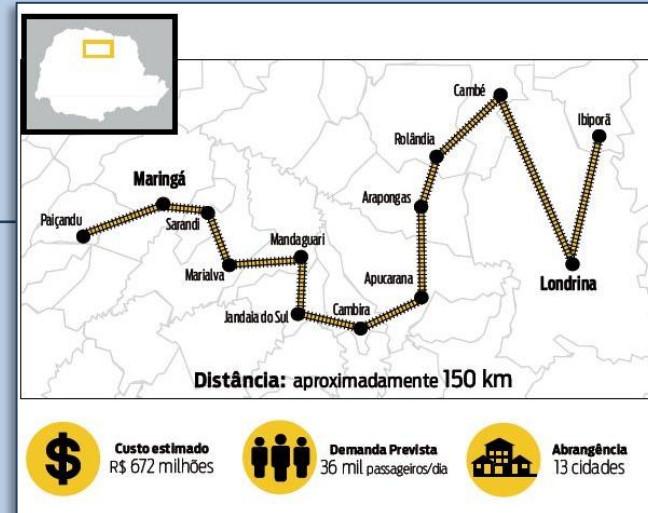


PRELIMINARY RESULTS OF EVTEA

Presented by LabTrans / UFSC preliminary results of EVTEA. Participation of SEIL, SEIM Agency and Terra Roxa, coordinated by MINISTRY OF TRANSPORT. Preposition in enabling the proposal by the MINISTRY OF CITIES: PAC2.

2012

Agosto





## MUNICIPALITIES

13



## DISTANCE

150 km



## COST OF PROJECT

R\$ 700 Million / US\$ 190 Million



## DEMAND FORECAST PASSENGER

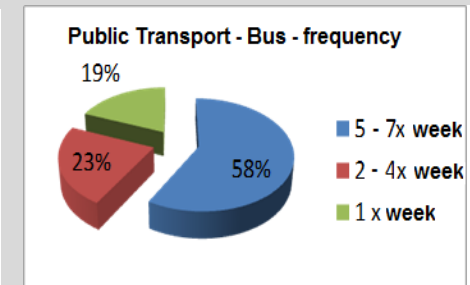
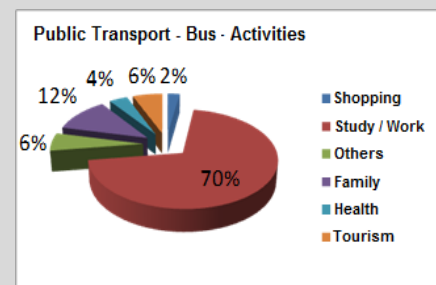
36.000 Passengers/day

## HIGHLIGHTS

- Construction of a new line next to existing
- Regional train with urban service

## Highlights of the Feasibility Study - Demand:

- Propensity of people to adopt LRT instead of the current public transport (bus): 60,49%;
- Propensity of people to adopt LRT instead of private vehicles: 43%;
- 52% of the passengers/drivers travels on the track 5-7 days/week;
- 74% of the passengers/drivers travels on the track to work or study;
- **13,2 million passenger are estimated for the first year of operation.**





**GOVERNADOR**

*Beto Richa*

**VICE GOVERNADORA**

*Cida Borghetti*

**SECRETÁRIO DE PLANEJAMENTO E COORDENAÇÃO GERAL**

*Silvio Barros*

Rua Jacy Loureiro de Campos, s/nº | Centro Cívico – 4º andar  
+ 55 41 3313-6275

**Technical Contact**

*Mauro José Corbellini*

mauro.corbellinni@sepl.pr.gov.br  
+55 41 3313-6290

**Jurandir Guatassara**

guatassara@sepl.pr.gov.br  
+55 41 3313-6299